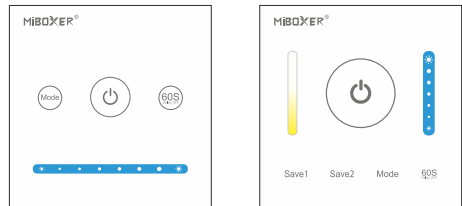
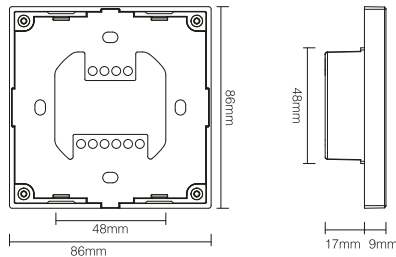


1. Features

This product is touch panel controller designed with standard 86*86mm-box structure which can be connected with constant voltage LED strip or lamp. You can pair it with remote control and enjoy remote control function, It's flexible and convenient to use.



Model No.: P1
Panel Controller (Single Color)

Model No.: P2
Panel Controller (Color Temp.)

Panel Controller (Single Color)

Model No.: P1

Input/Output Voltage: DC12V~24V RF: 2.4GHz
Output: 5A/Channel Control Distance: 30m
Total Output Max: 10A Working Temp.: -20~60°C

- Dimmable control
- Smartphone APP control (2.4GHz gateway is needed)
- 2.4G RF wireless transmission technology
- Support third party voice control (2.4GHz gateway is needed)
- Remote control Control distance 30m
- 60S Delay OFF

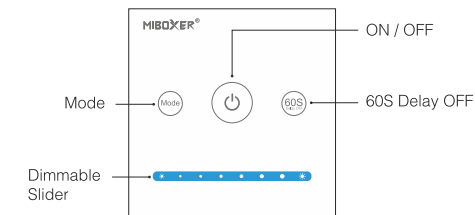
Panel Controller (Color Temp.)

Model No.: P2

Input/Output Voltage: DC12V~24V RF: 2.4GHz
Output: 5A/Channel Control Distance: 30m
Total Output Max: 10A Working Temp.: -20~60°C

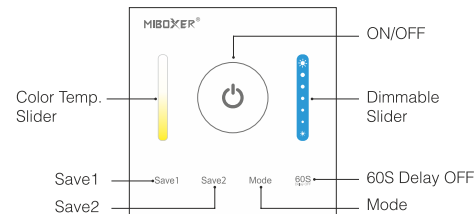
- Color temperature 2700K~6500K
- Dimmable control
- 2.4G RF wireless transmission technology
- Smartphone APP control (2.4GHz gateway is needed)
- Support third party voice control (2.4GHz gateway is needed)
- Remote control Control distance 30m
- 60S Delay OFF

2. Function



P1 Button Function

- 1. Short press ON / OFF switching
2. Long press to turn on night light while light is on.
3. Short press twice to enter the learning code state (see 5 for details) while light is on.
- 1. When the light is ON, Press " 60S ", the light will be off automatically after 60 seconds.
2. When light is OFF, long press 5 seconds to turn ON the indicating sound.
- 1. Press mode shortly, switch to next mode. 9 modes switching. Long press "Mode" to exit dynamic mode.
2. When light is OFF, Long press 5 seconds to turn OFF the indicating sound.
- Touch dimming slider to change the brightness from 1%~100%.



P2 Button Function

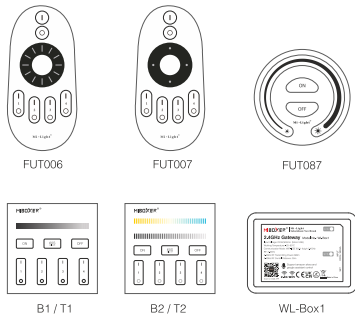
- 1. Short press ON / OFF switching
2. Long press to turn on night light while light is on.
3. Short press twice to enter the learning code state (see 5 for details) while light is on.
- When the light is ON, press " 60S ", the light will be off automatically after 60 seconds.
- Mode** Press mode shortly, switch to next mode; 9 modes switching.
- Touch dimming slider to change the brightness from 1%~100%.
- Touch CCT slider, change the color Temperature from 2700K-6500K.
- Save1** 1. Press " Save1 " shortly, select save1 mode; long press " Save1 ", save present mode to save1.
2. When light is OFF, long press 5 seconds to turn OFF the indicating sound.
- Save2** 1. Press " Save2 " shortly, select save2 mode; long press " Save2 ", save present mode to save2.
2. When light is OFF, long press 5 seconds to turn ON the indicating sound.

Panel Controller

Model No.: P1 / P2

3. Link/Unlink

Compatible with these remote controls (Purchase separately)



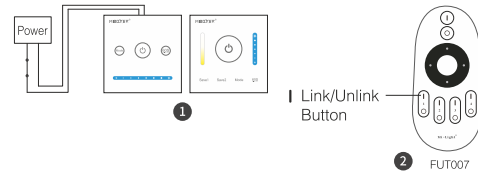
Light will work after linking with remote control; for more details, pls read the remote instruction.

4. P1 / P2 Dynamic Mode table

State	Number	Mode	Brightness
P1/P2 Dynamic Mode	1	Gradual change fast	Adjustable
	2	Gradual change in middle speed	
	3	Gradual change Slowly	
	4	Jump to change Fast	
	5	Jump to change in middle speed	
	6	Jump to change slowly	
	7	Blinks fast	
	8	Blinks in middle speed	
	9	Blinks slowly	

5. Remote control Link/Unlink

Support all remote control to do Link/Unlink (see 3 for details)



Link

Press "⊕" **2 times continuously** when light is on
 Press the remote control within 3 seconds * "1" key **3 times**
 The light blink 3 times slowly means the linking is done successfully

Unlink

Press "⊕" **2 times continuously** when light is on
 Press the remote control within 3 seconds * "1" key **5 times**
 The light blinking 10 times quickly means the unlinking successfully

If the link or unlink failed, please follow the above steps again.

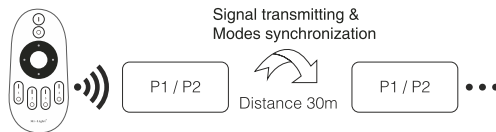
6. Signal transmitting

One controller can transmit the signals from the remote control to another controller within 30m, as long as there is a controller within 30m, the remote control distance can be limitless.

7. Modes synchronization

Different controllers can work synchronously when they are started at different times, controlled by the same remote, under same dynamic mode and within 30m distance.

The same dynamic mode, the same speed can be synchronized.



8. PWM high frequency / low frequency switching

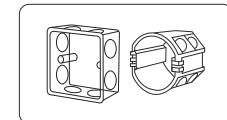
Switch to high frequency (8KHz): on the condition of turning on the light

1. Short press the "OFF" button of the **remote control** once;
2. Short press the "ON" button of the **remote control** 5 times within 3 seconds, the white light blink 2 times quickly, indicating successfully.

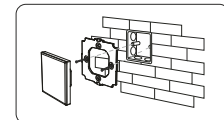
Switch to low frequency (500Hz): on the condition of turning off the light

1. Short press the "ON" button of the **remote control** once;
2. Short press the "OFF" button of the **remote control** 5 times within 3 seconds, the white light blink 2 times slowly, indicating successfully.

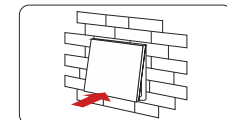
9. Installation / Dismantlement



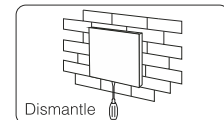
Install the bottom case into the wall; Above are the standard bottom cases.



Fix the controller base on the bottom case with screw.



Clicks into the upper side of glass panel on the controller base, then press the lower side slightly to make it clicks into the controller base.



Dismantle
 Plug into the below bayonet with a screwdriver, and upward screwdriver, then you can dismantle the controller.

Attention:

1. Please check whether the voltage of the power supply is in accordance with the controller, and please check the connection of both the cathode and anode, otherwise the controller will be broken.
2. Please don't connect wires with power on. Please turn on again only when it is in right connection and no short circuit.
3. Please do not use the controller in the place with widely range metal area or strong electromagnetic wave nearby, otherwise, the remote distance will be seriously affected .



Made in China